

ONE

OCEAN NETWORK EXPRESS



ONE CONNECTS THE WORLD

ONE was established through the integration of the container business of 3 Japanese shipping companies.

Operating more than 230 vessels, it offers an expeditious and a reliable international network of over 165 services to 120 countries and beyond. **ONE** has a fleet size of approximately 1.8 million TEU.

We believe in harnessing innovation and technology to bring new opportunities to businesses by providing them access to what they need from around the globe.



OUR KEY MILESTONES



2016
Announcement of K-Line, MOL, NYK container business consolidation



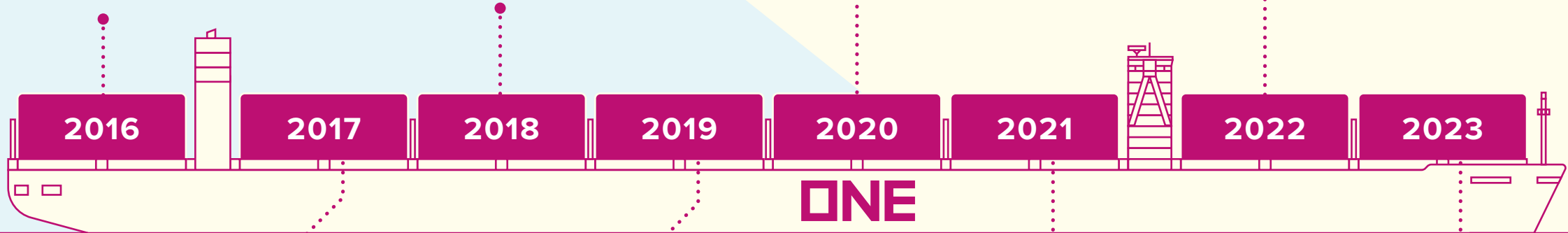
2018
Commencement of services



2020
THEA expansion



2022
Launch of ONE Green Strategy



2017
Establishment of ONE



2019
Inauguration of Magenta Singapore Terminal



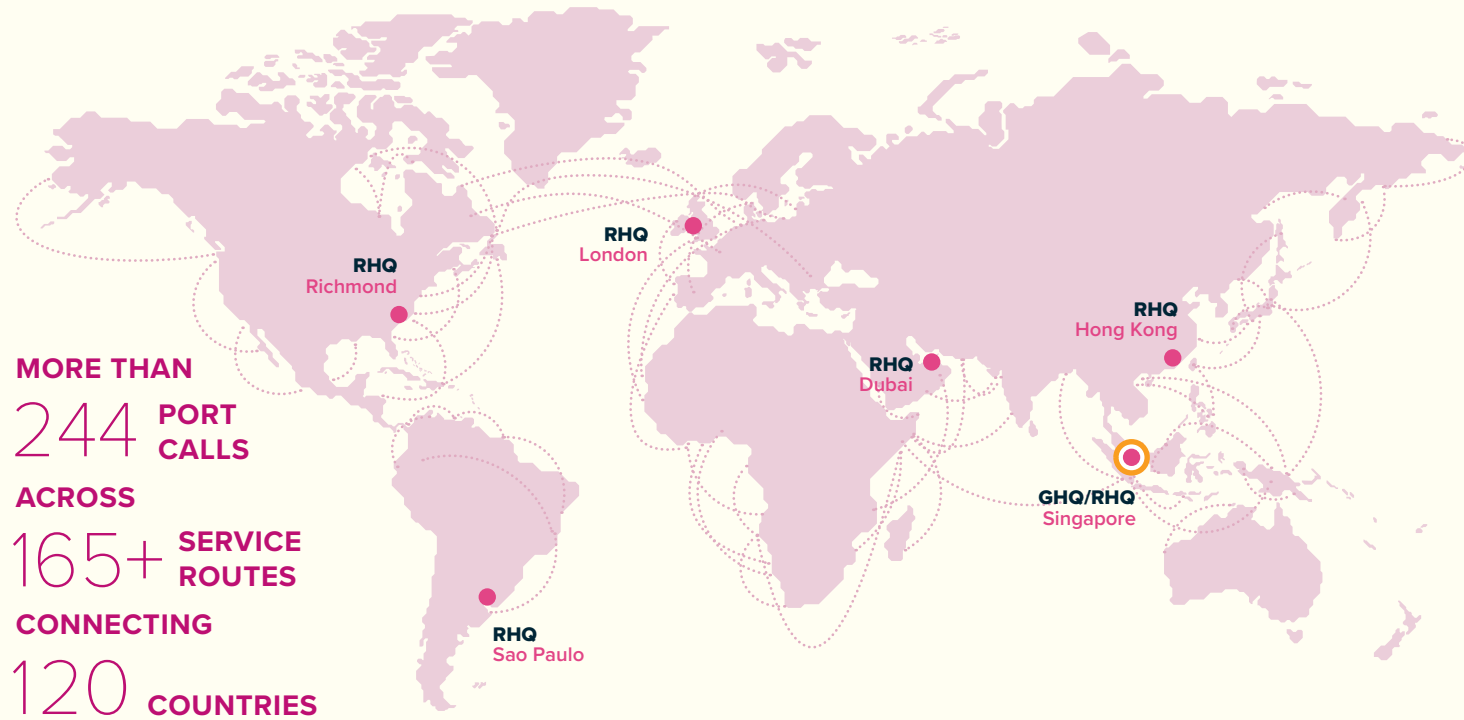
2021
• Launch of ONE mobile application
• Expansion of reefer fleet



2023
• Fifth year anniversary
• We now have more than 165 services connecting 120 countries

OUR GLOBAL NETWORK

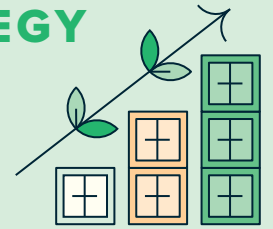
○ GHQ (Global Headquarters)
● RHQ (Regional Headquarters)



MORE THAN
244 PORT CALLS
ACROSS
165+ SERVICE ROUTES
CONNECTING
120 COUNTRIES

SUSTAINABLE GROWTH STRATEGY

Committing to sustainable growth and long-term contribution to broader stakeholders



Committed to providing high-quality and safe global shipping services

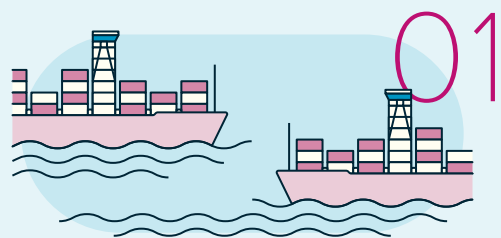
Enhance operational efficiency

Invest in green and digital transformation

Promote a strong corporate culture and talent pool

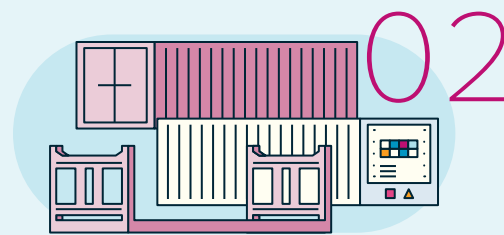
Maintain and enlarge fleet capacity to capture market organic growth

KEY BUSINESS DEVELOPMENTS



01 VESSEL FLEET

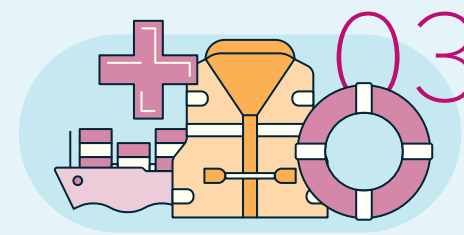
Actively expanded ONE's core fleet to meet demand for future sustainable supply chains. Further upgrades to come with variety of vessels scheduled for delivery.



02 EQUIPMENT

Enhanced service quality and customer experience:

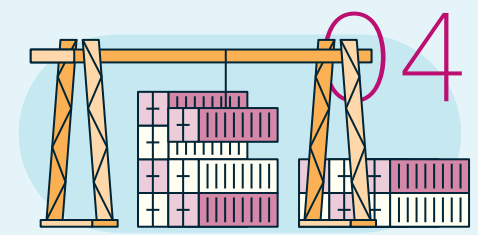
- Stable investment for dry, special and reefer container boxes
- Telematic devices to be installed in reefer boxes to provide greater visibility within cargo



03 SAFETY

Continues to be a key agenda of ONE's business developments. Safety campaigns for vessel operation are conducted annually by:

- Sharing best practices and safety initiatives among the fleet
- Continuous cultivation of safety culture among shore and sea operations




04 TERMINALS

Ongoing investments in the following key terminals are progressing:

- **Magenta Singapore Terminal, Singapore**
 - Joint venture with PSA Singapore
 - Inaugurated on May 2019
- **Yusen Terminals LLC / Trapac LLC, US West Coast**
 - Acquisition completed in 2023

OUR DIGITAL TRANSFORMATION

We aim to deliver superior customer experience through the following channels of digital transformation:

PEOPLE	PROCESS	SYSTEM
Sales and CS Operating Model  <ul style="list-style-type: none"> • Omni-channel experience • Partner integration 	Operational Excellence  <ul style="list-style-type: none"> • Hassle-free planning and simple shipment management • Supply chain visibility 	Data-driven Enterprise  <ul style="list-style-type: none"> • Integrated sales • Servicing CRM platform

OUR E-COMMERCE

ONE eCommerce: Simple and user-friendly self-help platform for easy shipment planning and management, accessible anytime, anywhere



Clear shipment overview
Access real-time import and export shipment status and take action anytime with 24/7 visibility

Effortless payment
Online payment solutions allow you to pay easily and securely

Simple and secured endorsements
Issue, transfer and sign bills of lading and other documents electronically across partners

Track and Trace
Real time access to your cargo status with projected events as well as past events history

Easy VGM submission
Batch VGM submission via excel template. Container tare weight can be inquired online

Effortless Quote to Book
Obtain your quotation and seamlessly submit your booking with guaranteed secured online transactions

Live support across the globe
Reach out to our support agents easily if BOT assistance is not able to fully resolve issue

Generate reports smoothly
Create, save and send customized reports which cover multiple aspects of your business

OUR SUSTAINABILITY PRIORITIES

ONE aims to be sustainable and resilient, and a trusted partner for our customers in delivering global shipping solutions



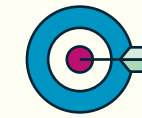
 <p>Environment</p> <p>We protect the environment and ecosystems by taking action on climate change, pollution and using resources responsibly.</p>	 <p>Governance</p> <p>We uphold the highest standards of ethical business conduct and corporate governance, in compliance with regulation and internal policies.</p>
 <p>Social</p> <p>We nurture and empower people by managing our talent, protecting their health and safety, respecting their human rights and supporting local communities.</p>	 <p>Operational Excellence</p> <p>We drive operational excellence through digitalization, to enhance customer experience and ensure safe operations.</p>

OUR GREEN STRATEGY



Vision

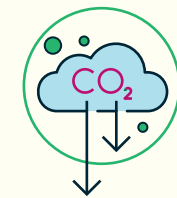
To be a global leader in the realization of environmentally sustainable shipping



Mission

To achieve carbon net-zero shipping via best practices and open collaboration

INITIATIVES



01 – DECARBONIZATION

Green Investment

- Construction of twelve 13,000 TEU methanol dual-fuel container ships delivered from 2027
- Installation of Bow windshields/Embarking on wind propulsion trial

Alternative Fuels

- Awarded Approval in Principle (AiP) for an Ammonia Dual-fueled vessel
- Various projects and discussion involving external industry partners

Operational Efficiency

- Core operating systems are continuously upgraded
- Vessel operation system to manage CII ratings

Ecosystem Building

- Participation and sponsorships of industry movements (e.g., Collaboration with Global Centre for Maritime Decarbonisation)

Carbon Management

- ONE Eco Calculator for customers released
- Study of CCS installation



02 – ENVIRONMENTAL

Ship Recycling

- Preparation of sustainable and transparent ship recycling

Environmental Conservation

- Active participation in ecological conservation programs

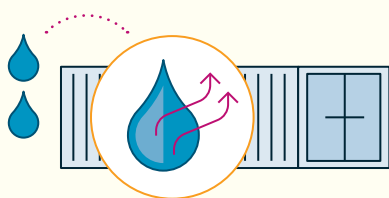


REEFER CARGO

Young and state of the art energy efficient reefer fleet of more than **300,000 TEU** ranks us among the **top 4 Reefer carriers** in the world.

ONE's Global Reefer Business planning team develops our global reefer marketing and business strategy through monitoring of market demand and closely collaborating with the regional reefer steering desks located across the world.

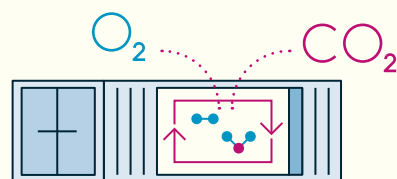
FEATURES



Dehumidification

ONE reefer containers are able to **control humidity within the range of 95% to 65%**.

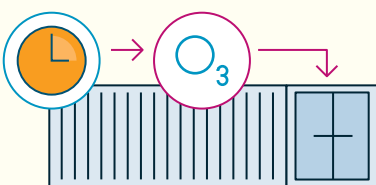
Lowering the relative humidity in a container during transportation is especially required for items like bulbs to ensure dry packaging, prevent rot and reduce fungal development.



Controlled Atmosphere (CA)

We maintain the quality of cargo by keeping the concentration of oxygen and carbon dioxide balanced during transportation.

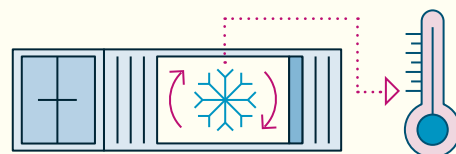
Storage period of fruits and vegetables in the hold can be extended this way.



Enhanced Atmosphere

Ozone Enhanced Atmosphere is the active introduction of ozone into the internal atmosphere of the container to preserve the cargo.

Regulated amounts of ozone are released throughout the voyage which decomposes the ethylene generated by climacteric fruit and vegetables as they ripen and slowly decay.



Cold Treatment (CT)

An uninterrupted and sufficiently low temperature is maintained in our reefer containers for a pre-determined duration in order to kill insects and larvae that may be hidden in perishable goods.

Temperature probes also help to measure and record the internal temperature of the cargo.

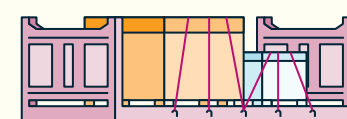
SPECIAL CARGO

We have rich history and experience in handling special cargo of all kinds.

With our extensive international port coverage, on-time shipping schedule, well balanced equipment supplies and tailor-made customer service, ONE is definitely your ideal partner for the transportation of special cargo.

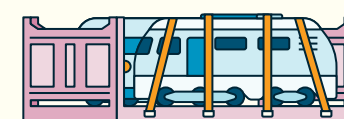


TYPES OF SPECIAL CARGO



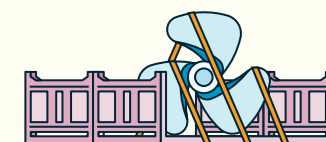
In-Gauge Cargo (IG)

Special cargoes which are transported using Flat Rack or Open Top containers, and are placed within the internal dimensions of the containers.



Out-of-Gauge Cargo (OOG)

Special cargoes which are also transported using Flat Rack or Open Top containers, despite having dimensions which exceed the width and/or height of the containers.



Breakbulk Cargo (BB)

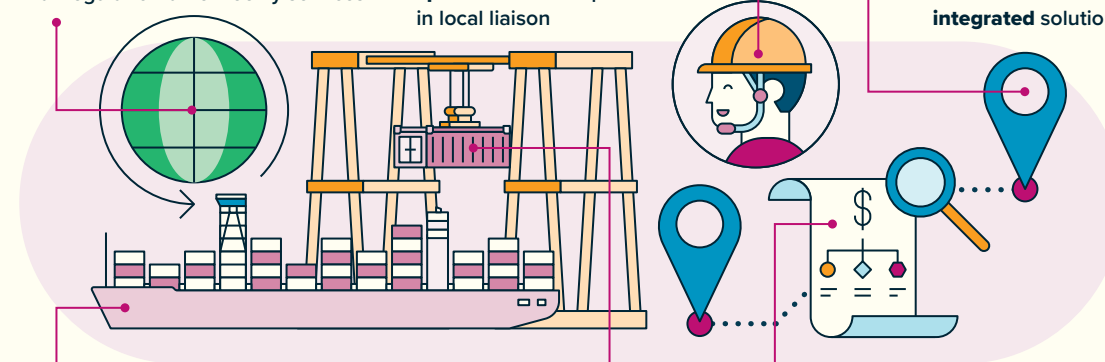
Extra-large special cargoes which are transported using multiple Flat Rack containers. For example, luxury yachts, over-sized machines, trains, construction equipment and generators.

FEATURES

Extensive worldwide port coverage with regular on-time weekly services

Dedicated country specialists with expertise in local liaison

Point-to-point and hassle-free integrated solutions



Sizeable container fleet with extensive equipment/facilities support

Priority space planning and management of special cargo

Transparent pricing structure

Our reefer experts in regional offices work closely with Global Reefer Business planning team to offer customized reefer solutions. Scan this QR code or click [here](#) to find out more:



ONE employs teams of worldwide specialists who have the handling knowledge and skills to ensure your special cargo is shipped safely and efficiently. Scan this QR code or click [here](#) to find out more:



AS ONE, WE CAN.

ONE
OCEAN NETWORK EXPRESS

Ocean Network Express Pte. Ltd.

7 Straits View, #16-01 Marina One East Tower, Singapore 018936

Tel: +65 6220 0196

www.one-line.com